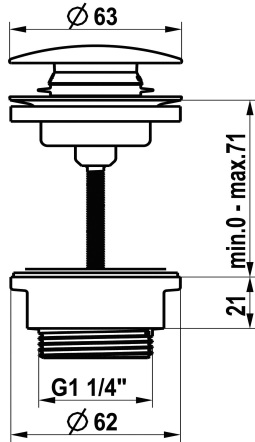
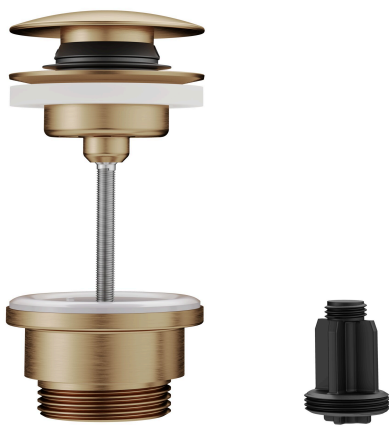


## KWC Pop-up valve Push Open

Modell-Linie: ACCESSOIRES | Z.540.049.778  
Spare parts | Spare parts taps



### KWC-No.

**360004482**  
chromeline

**360004483**  
stainless steel

**3600013518**  
brushed gold

**3600015501**  
matt black

**3600013519**  
brushed copper

**3600013530**  
brushed graphite

### Farbcode

chromeline

Edelstahl

brushed gold

matt black

brushed copper

brushed graphite

\* KWC pop-up valve Push Open  
\* Made of stainless steel  
\* 2 in 1 function

- press to open and close  
- can be locked in the open position  
\* For washstands with or without an overflow

### Technical Data

Farbcode

Artikeltyp

Mass Höhe

Material

brushed copper

Ablaufventil

0-71

rostfreier Stahl

NEW