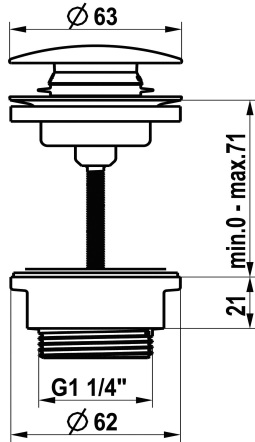
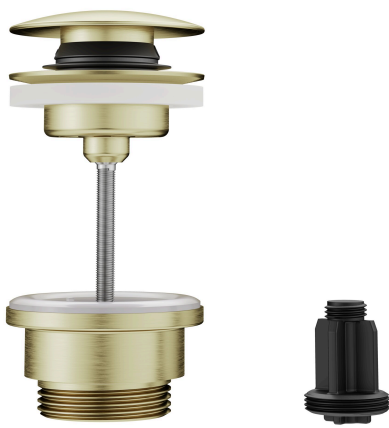


KWC Pop-up valve Push Open

Modell-Linie: ACCESSOIRES | Z.540.049.775
Spare parts | Spare parts taps



KWC-No.

360004482
chromeline

360004483
stainless steel

3600013518
brushed gold

3600015501
matt black

3600013519
brushed copper

3600013530
brushed graphite

Color_code

chromeline

stainless steel

brushed gold

matt black

brushed copper

brushed graphite

* KWC pop-up valve Push Open
* Made of stainless steel
* 2 in 1 function

- press to open and close
- can be locked in the open position
* For washstands with or without an overflow

Technical Data

Color_code

Article type

Measure_Height

material

brushed gold

Pop-up valve

0-71

stainless steel

NEW