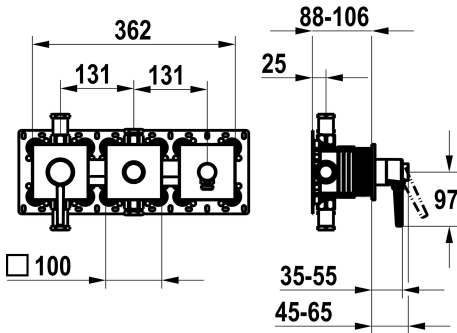


KWC MANA  
Trim kit, with safety device DIN EN 1717 – Lever mixer – Tub

Modell-Linie: MANA | 20.554.550.000  
Showers | Exposed bath mixer



KWC-No.

125604  
chromeline, trim kit, with safety device DIN EN 1717

NEW

- \* Trim kit with function unit KWC HOMEBOX
- \* Outflow
  - with integrated hose connection
  - above or below for the second consumer with CHOICE diverter without automatic reset
- \* KWC cartridge M 35-S HF
  - with ceramic discs
  - flow rate and temperature continuously variable

- \* Scope of delivery:
  - Lever mixer unit
  - Diverter unit
  - Hose connection unit
  - Fastening of the cover plate without screws
- \* To be ordered separately:
  - Unit for concealed installation KWC HOMEBOX Thermostatic/ lever mixer 2 consumers 39.006.261.931

Technical Data

Diameter
Handling
Color code
Installation type
Faucet_typ
Concealed unit
material

362 x 100
front lever
chromeline
Wall mounted
Lever mixer
Trim kit, with vacuum breaker
Brass

Spare Parts



Cartridge M 35-S HF

537602  
Z.537.602