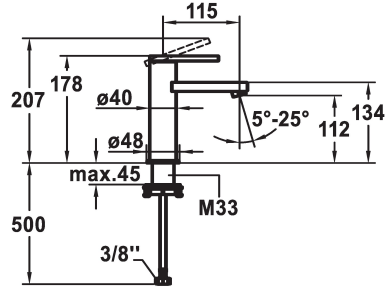


KWC AVA E Lever mixer - Basin

Modell-Linie: AVA E | 12.451.051.700FL
Taps | Manual taps



KWC-No.

124952
stainless steel, A 115, flexible connection hoses, with Push Open

124953
stainless steel, A 115, flexible connection hoses, without pop-up valve

- * Lever mixer
- * EcoProtect - water-saving device
- * Fixed spout
- Neoperl® Perlator® SSR, swivelling jet regulator
- * KWC cartridge S 25
- with ceramic discs

Pop-up_valve

with Push open

without pop-up valve

- flow rate and temperature continuously variable
- * Flexible connection hoses 3/8"
- * QuickInstallation - Fastening via threaded connection with locking screws
- * Mounting hole size $\varnothing 35$ mm

Technical Data

Flow rate
Pop-up_valve
Connection
Spout
Handling
Color code
Installation_type
Faucet_typ
Dimension Height
G_Acoustic group
Projection_A
Energy Label
Dimension Water outlet
material

5 l/min (3 bar)
without pop-up valve
Flexible connection hoses
fixed
top lever
stainless steel
Pillar installation
Lever mixer
178
I
A 115
A
112
stainless steel



Spare Parts

KWC AVA E Lever mixer - Basin

Modell-Linie: AVA E | 12.451.051.700FL
Taps | Manual taps



Cartridge S 25

538711
Z.536.032

**Service key Neoperl © casing M20x1,
orange**

638338
Z.638.338
